

Jayco | 2025 Seneca XT Super Class C Motorhome



SENECA XT

POWER & LUXURY COMBINED

2+3
YEAR | YEAR
WARRANTY



WOOD SELECTIONS

ARCADIAN ASH



Top Cabinets



Bottom Cabinets

HUNTINGTON



All Cabinets

FABRIC SELECTIONS

WARM RIVER



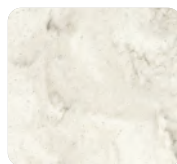
Bedspread



Furniture

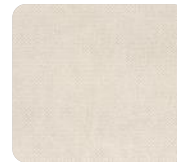


Floor

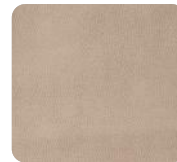


Countertop

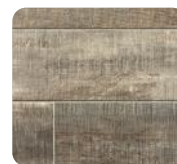
COLD SPRINGS



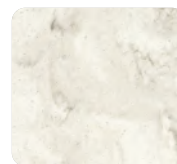
Bedspread



Furniture

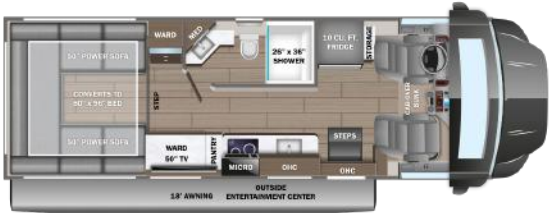


Floor



Countertop

29T



OPTIONS

A

15 Cu. Ft. Fridge

B

Power Theater Sofa

32U OPTIONS: A, B



35L OPTIONS: A, B



EXTERIOR SELECTIONS



Backwoods Adventure Full-Body Paint



Desert Storm Full-Body Paint



Mountain Meadow Full-Body Paint



Sandstorm Full-Body Paint



Scorched Full-Body Paint



Summer Storm Full-Body Paint

STANDARDS & OPTIONS

CUSTOMER VALUE PACKAGE

JRide® Premium: Computer-balanced driveshaft, heavy-duty front and rear stabilizer bars, Koni® shocks
One-piece, seamless, fiberglass front cap with auxiliary flood lights
One-piece, seamless, fiberglass rear cap with auxiliary flood lights (32U, 35L)
Automotive-bonded, panoramic window in front cap with power shade
15,000 BTU A/C unit with heat pump and second 13,500 BTU A/C unit
Electric, wind-sensing, legless patio awning with LED lights
2,000W pure sine wave inverter
200W solar panel with dual controller
Starlink satellite internet system
Backup and side-view cameras
Two-burner induction cooktop
10 cu. ft. 12V refrigerator (29T)
18 cu. ft. residential refrigerator (32U, 35L)
Convection microwave oven

DRIVING

Ford® F550 4X4 chassis (29T)
Ford® F600 4X4 chassis (32U, 35L)
GVWR - 19,500 lb. (29T); 22,000 lb. (32U, 35L)
GCWR - 31,500 lb. (29T); 34,000 lb. (32U, 35L)
6.7L Power Stroke V8 Turbo diesel engine with block heater - 330 HP at 2,200 RPM and 950 ft. lb. torque at 1,800 RPM
10 speed automatic transmission
332-amp alternator (dual)
All-terrain tires - 245/70R19.5 (225/70R19.5 on F550 chassis)
HiSpec matte black aluminum rims
2 in. BDS radius arm suspension lift
12,000 lb. rear hitch receiver
7-pin plug
Hellwig® helper springs (F550 chassis only)
Ford® AdvanceTrac® with RSC® (roll stability control) and trailer sway control
Integrated trailer brake controller
Single chassis battery (750 CCA 78 AH)
Dual fuel tanks (26.5 gal. and 40 gal.)
Ford® SYNC® 4 infotainment center with Apple® CarPlay™ and Android Auto™
Audible lane departure warning
Pre-Collision Assist® with automatic emergency braking (AEB)
SOS Post Crash Alert System™
Driver and passenger airbags
Safety Canopy® system with roll-fold side-curtain airbags
Remote keyless entry and perimeter anti-theft alarm
SecuriLock® anti-theft ignition
Quad dual-beam halogen headlights
Rainlamp wiper activated headlights
Remote start
Adjustable gas/brake pedals
Individual tire pressure monitoring system (TPMS) (N/A on F550 chassis)
Cruise control
Power windows and door locks
Auxiliary start switch
8-way power driver seat
Tilt steering wheel
Privacy curtains for cab area

EXTERIOR

StrongholdVBL™ roof, floor and sidewalls
Bead-foam insulation (R-24 max roof, R-9 max floor and R-8 max walls)
One-piece, seamless, crowned fiberglass roof
Lippert™ 4000 series frameless bonded windows
Premium Sikkens full-body paint
Automatic hydraulic leveling jacks

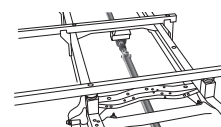
Electric-powered entrance steps
Slideout cover awnings
Exterior entertainment center with outside speakers, LED HD Smart TV and Bluetooth® receiver
Winegard® In-motion satellite dish
Full pass-through storage compartments with lockable slam latch doors
Flush-mount LED marker lights
Third brake light
Roof ladder
KING Jack™ antenna
Cable TV hookup with RG-6 coax
6,000W diesel generator and auto-gen start
(2) 6V AGM house batteries
Transfer switch with reverse polarity protection
50-amp service
Powered cord reel (32U, 35L)
24.5 gal. propane tank (83 lb.)
LP quick-connect hookup
Exterior utility center
Winterization drain system
Black tank flush
Outside shower
12V demand water pump
Water filtration system

INTERIOR

Custom-molded ABS surround in cab-over area
Overhead bunk with 750 lb. capacity
Firefly total coach control system with wall-mounted touchscreen and mobile app
84 in. interior ceiling height with padded vinyl ceiling
High-intensity, recessed LED ceiling lights
Integrated day/night cassette shades
Raised-panel hardwood cabinet doors and drawer fronts
Deluxe hidden cabinet hinges
Ball-bearing drawer guides
30,000 BTU auto-ignition furnace
10 gal. gas/electric water heater
Furrion® electric fireplace (35L)
Jayco-exclusive, easy-operation legless dinette table (32U, 35L)
2-point lap safety belts in all designated seating locations
Car seat tethers (select floorplans)
LED HD Smart TV in living area
LED HD Smart TV in bedroom (32U, 35L)
JBL® audio system
LED-lit, solid-surface kitchen countertops with recessed stainless steel sink and sink covers
Pull-out countertop extension (select models)
Decorative shower surround with glass door, skylight and light
Macerating porcelain toilet
Powered roof vent in bathroom with wall switch
Rear U-shaped power sofa converts to 80 in. x 96 in. bed (29T)
Walk-around, king-size bed with bedspread and nightstands (32U, 35L)
Under-bed storage (select models)
Large wardrobes
Smoke alarm
Carbon monoxide detector
Fire extinguisher

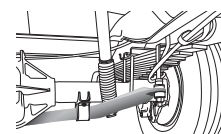
OPTIONS

Ford® F600 chassis upgrade (29T)
Power theater seating
15 cu. ft. 12V refrigerator
Combination washer/dryer (35L)
Canadian Shaw® TRAV'LER® satellite dish
Winegard® TRAV'LER® satellite dish - DIRECTV®



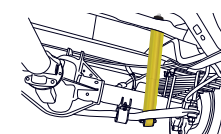
COMPUTER-BALANCED DRIVESHAFT

Ensures smooth and efficient power transfer to the wheels



HEAVY-DUTY FRONT & REAR STABILIZER BARS

A larger bar and polyurethane bushings, instead of rubber, transfer power faster for extra support, more stability and easier handling



KONI® SHOCK ABSORBERS

Controls bounce and sway when driving over expansion joints and rough roads

FLOORPLAN	GVWR (lbs.)	GCWR (lbs.)	WHEEL BASE	OVERALL LENGTH	EXTERIOR HEIGHT WITH SATELLITE AND A/C	EXTERIOR WIDTH	INTERIOR HEIGHT	FRESH WATER CAPACITY (gal.)	GRAY WASTE WATER CAPACITY (gal.)	BLACK WASTE WATER CAPACITY (gal.)
29T	19,500	31,500	205"	29' 10"	12' 6"	101"	84"	72	43	43
32U	22,000	34,000	227"	34' 2"	12' 6"	101"	84"	64	38	30
35L	22,000	34,000	258"	37' 3"	12' 6"	101"	84"	64	30	30

Meet your Jayco Dealer



Scan QR code for specification definitions

Some specs at the time of print may include estimates. For the most updated information, please visit Jayco.com

Jayco, Inc. | P.O. Box 460 | Middlebury, IN 46540

See dealer for further information and prices. All information in this brochure and on www.jayco.com is the latest available at the time of publication approval. Jayco reserves the right to make changes and to discontinue models without notice or obligation. Photography may show optional equipment or props used for decoration purposes only. RVs built for sale in Canada may differ to conform to Canadian codes. JAYCO and the JAYCO BIRD IN FLIGHT are registered trademarks of Jayco, Inc. Printed in USA 10/24 ©2024 Jayco, Inc. 2032960

Jayco - Part of Jayco Family of Companies

